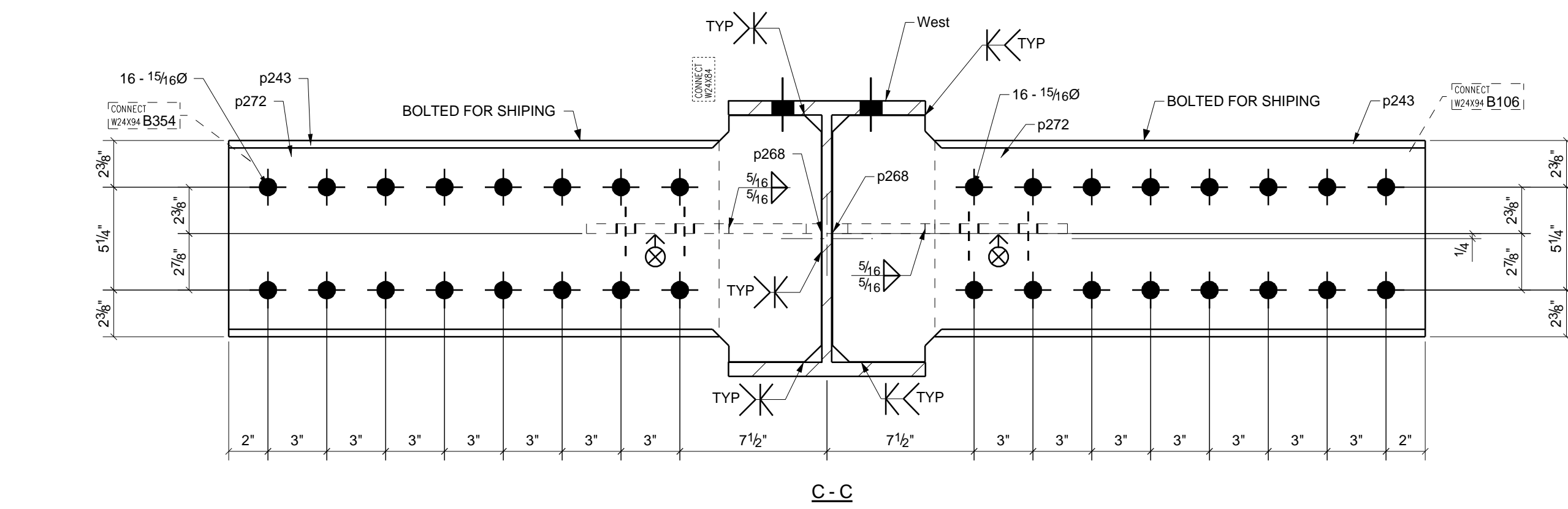
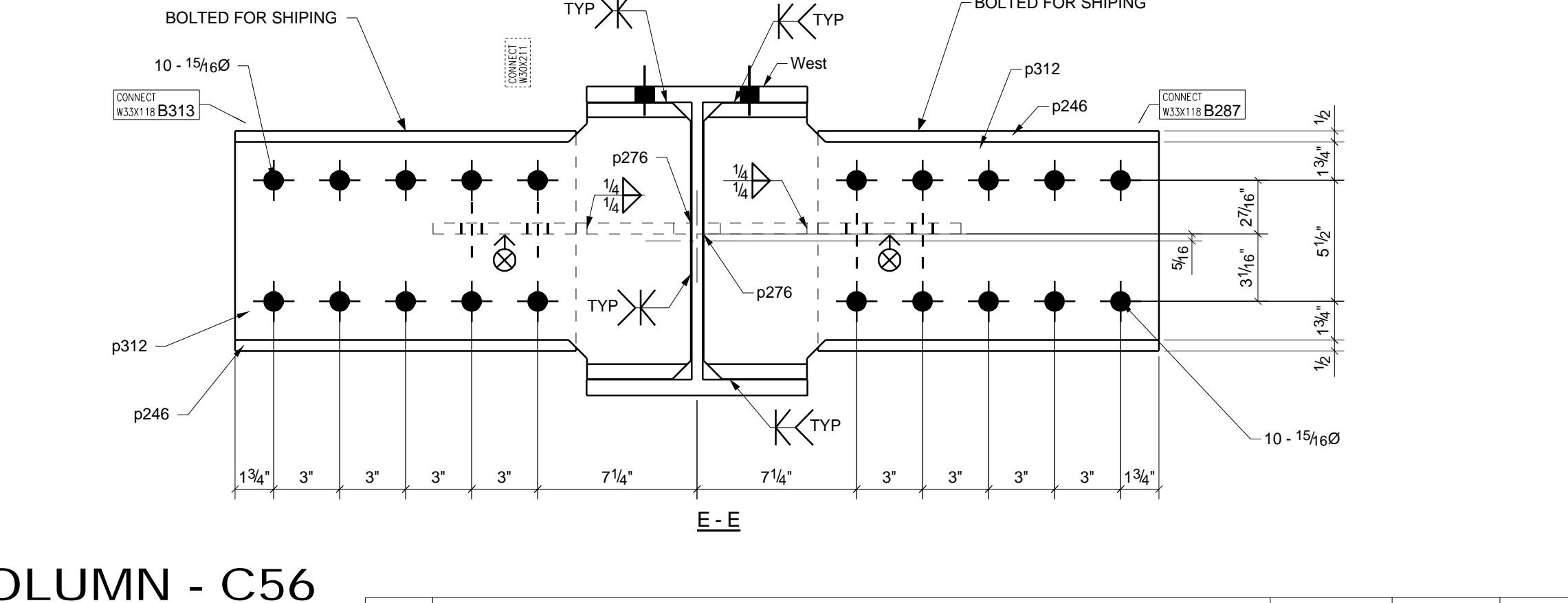
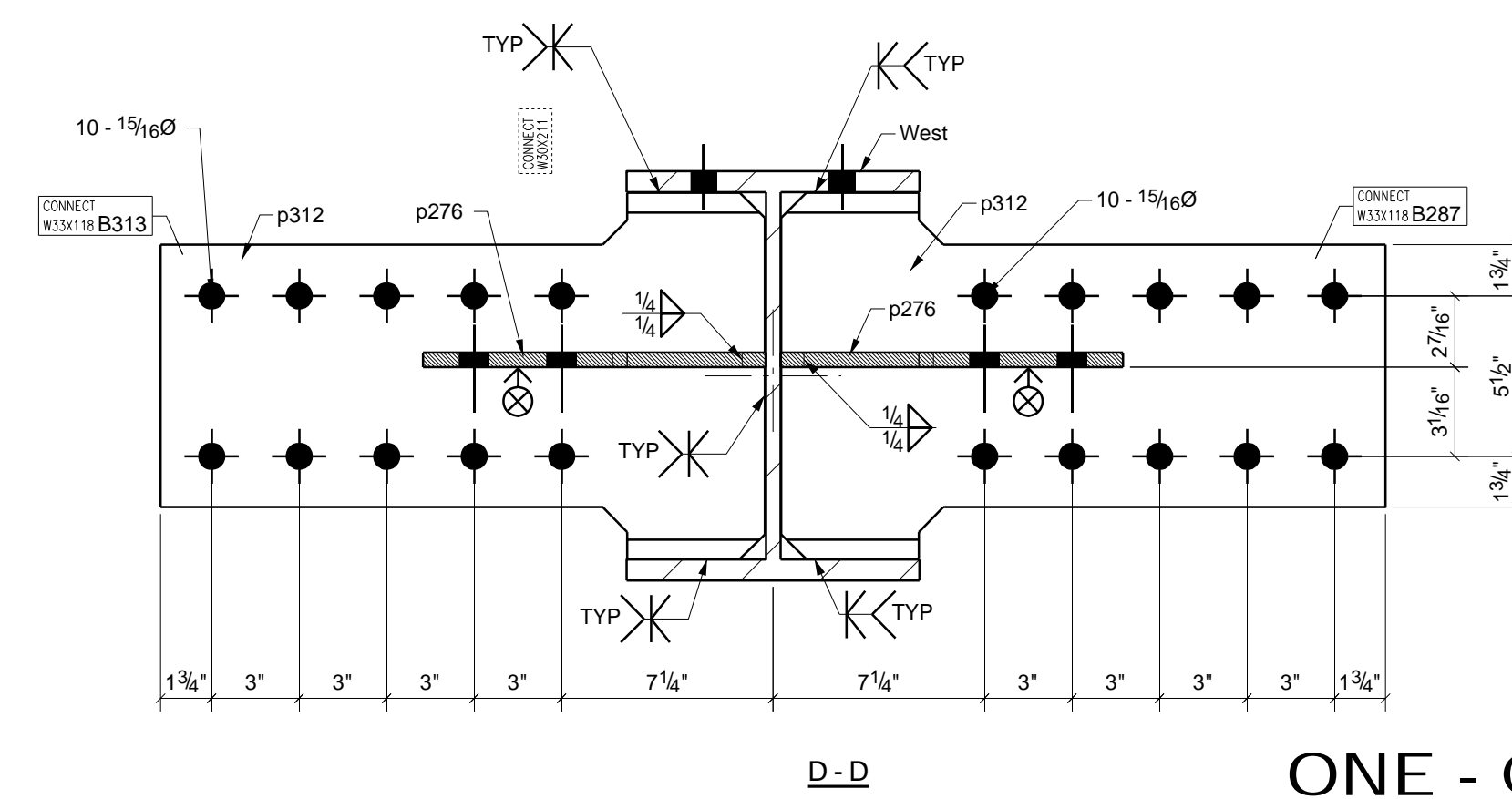
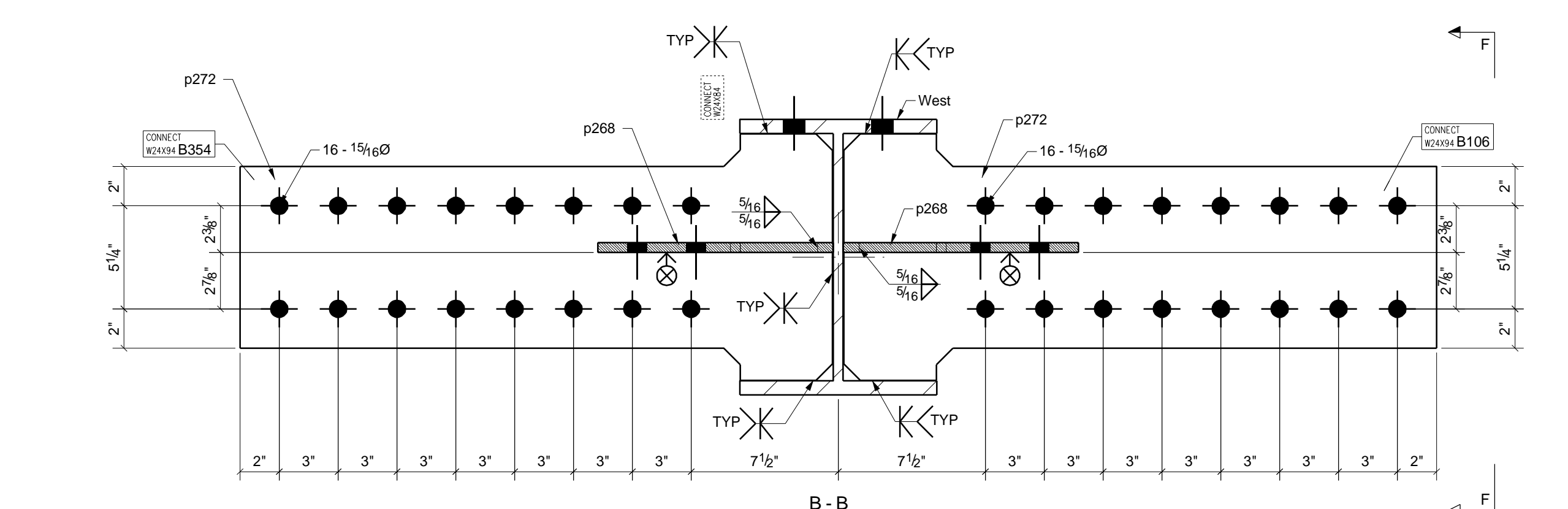
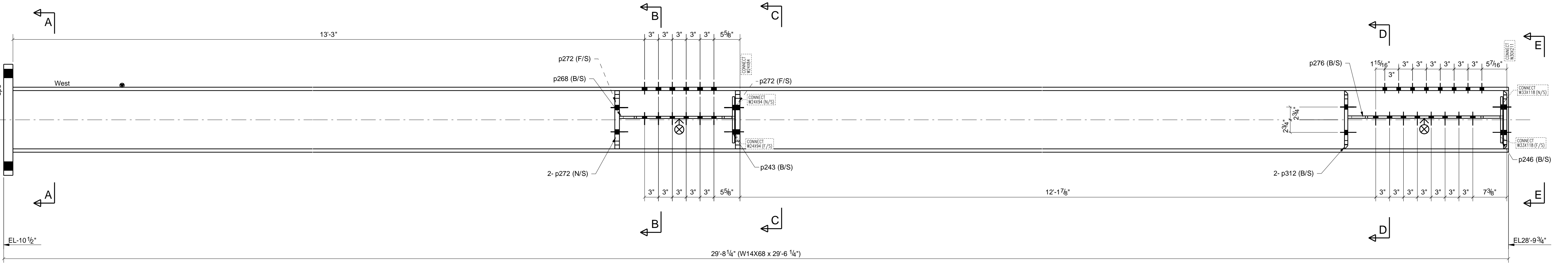
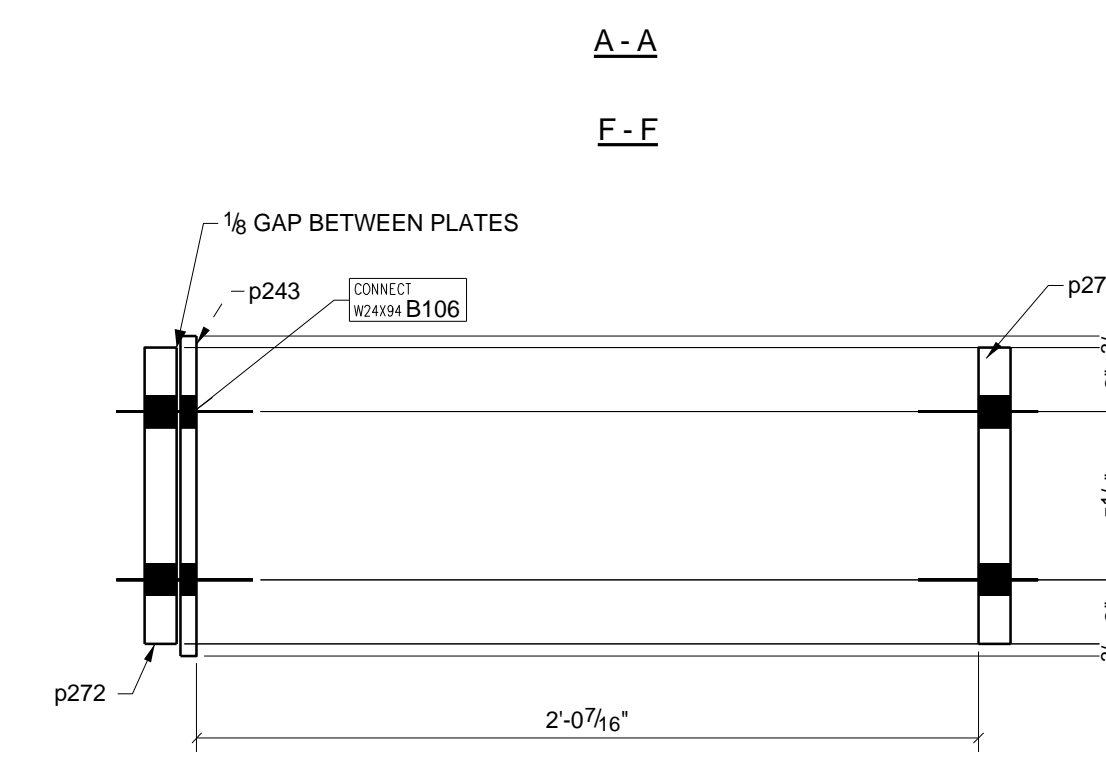
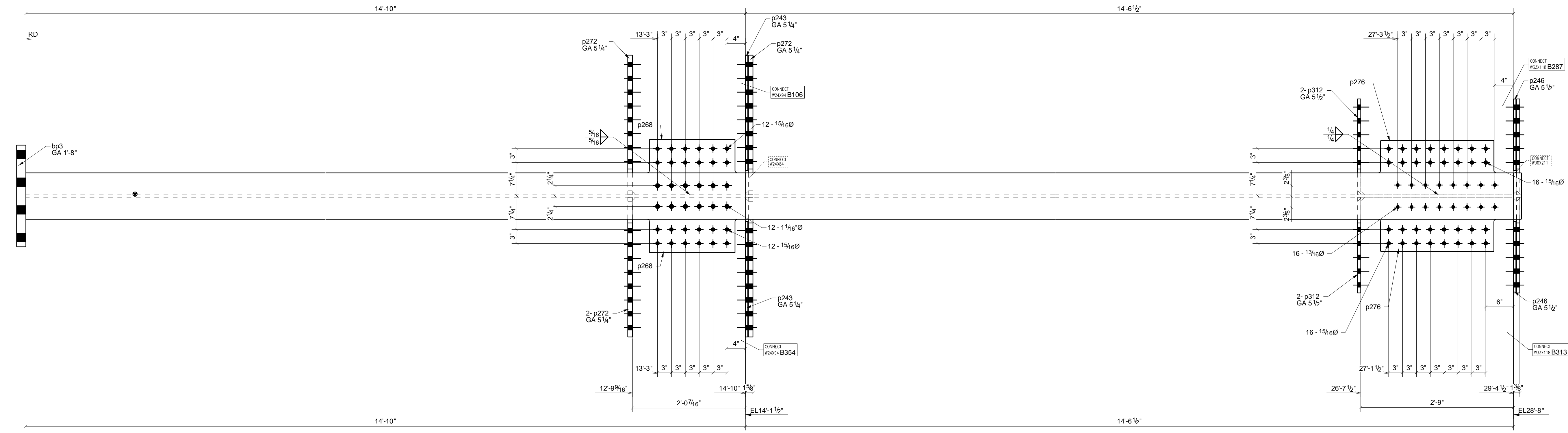
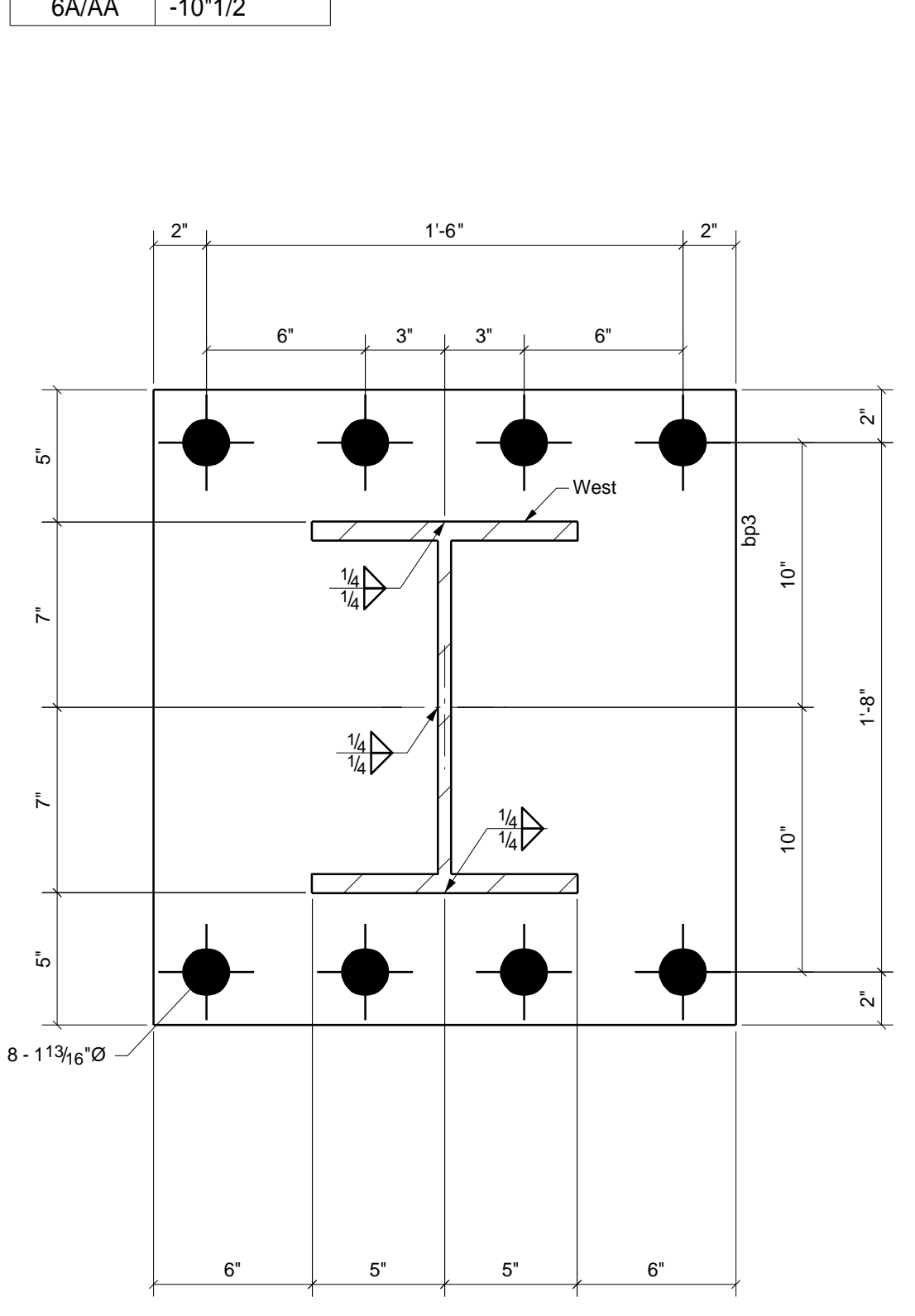


GRID LOCATION: 6A/AA
 BOTTOM ELEVATION: -10'1/2"



ONE - COLUMN - C56

W 14 1/16" x 7/16"
 F 10 1/16" x 3/4"

BILL OF MATERIAL						
SHIP	ASSEMBLY MARK	NO PCS	DESCRIPTION	LENGTH	PIECE-PART MARK	REMARKS
1	C56	1	W14X68	29'-6 1/4"	w102	SQ-2 A992
		1	PL2"X22"	2'-0"	bp3	A36
		2	FB1/2"X10"	2'-1"	p243	A36
		2	FB1/2"X10"	1'-3 1/2"	p246	A36
		2	FB1/2"X12"	2'-1 1/16"	p268	A36
		4	PL1"X12 9/16"	2'-6 3/16"	p272	A36
		2	PL1/2"X11 3/4"	2'-9 5/8"	p276	A36
		4	PL3/4"X12 9/16"	1'-8 11/16"	p312	A36

4	SURVEY ADJ. AND FOR FABRICATION	12/02/07	ESS
.B	For Approval (w/corrections up to RFI #6).	10/15/07	ESG
REV.	DESCRIPTION	DATE	DWN CHK

GENERAL NOTES

MATERIAL: AB=A307; W-SHAPE=A992; CHANNEL, ANGLE, PLATE=A36; HSS AND PIPE =A500 GR-B
 HOLES: 13/16" DIA. U/N CONNS.: 3/4" DIA Bolts ELECTRODES: E70XX
 SURFACE PREP.: one coat of shop primer AND PAINT:
 DESCRIPTION: COLUMN
 PROJECT NAME:
 LOCATION:
 DRAWN BY:
 DRAWING FILE: DATE: 12/08/2007
 MODIFY: DATE: 12/08/2007
 DRAWN BY: DATE:
 CHKD. BY: DATE:
 JOB No.: DRG. No.: C56